

**Inside  
This  
Issue:**

- Letter from the Chairman of the Board of Directors
- Letter from the President
- Spotlight on Southcentral Foundation Staff
- Services Information



# Southcentral Foundation

VOL. 2, NO. 7

ANCHORAGE, ALASKA

MAY 2001

## The Pathway Home treatment center opens its doors

Troubled Native youth have a new place to turn, thanks to a new treatment program called The Pathway Home initiated by Southcentral Foundation. The program will be conducted from a temporary 16-bed, residential treatment facility in Anchorage, which Southcentral Foundation opened in late January.

"This new program will help meet the massive need for services for Alaska Native youth of Anchorage, as well as Native youth statewide," according to Katherine Gottlieb, President & CEO of Southcentral Foundation.

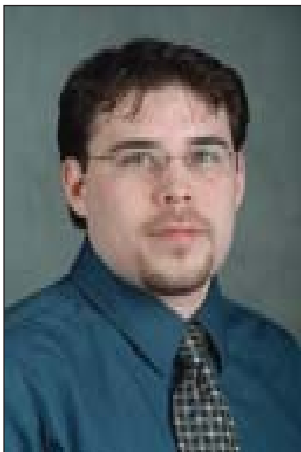
The program will benefit adolescent Natives (ages 13-17) who suffer primarily from substance abuse and may also experience developmental, behavioral, and mental health disorders. This temporary facility will house the program until Southcentral Foundation completes a larger, 36-bed facility in summer 2001.

The Pathway Home program provides integrated, culturally appropriate treatment and includes family and community-centered aspects of substance abuse and mental health treatment and rehabilitation. This uniquely designed program weaves Alaska Native

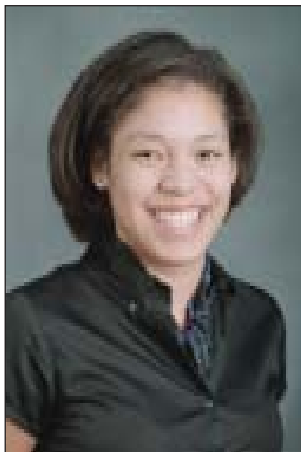
values and cultural aspects into teaching personal and vocational life-skills, and educational competencies. The program will take from 6 to 18 months for each youth to complete. Southcentral Foundation designed The Pathway Home program to ensure personal, social, cultural, spiritual, and economic well being and growth for youth after they leave the program.

For more information or to get a referral packet, contact The Pathway Home at 729-4955 (toll free: 1-800-478-3343) or email [fkopacz@citci.com](mailto:fkopacz@citci.com).

## Southcentral Foundation's Spotlight on Staff Success



**Jon Ross**  
Vice President of  
Community Services



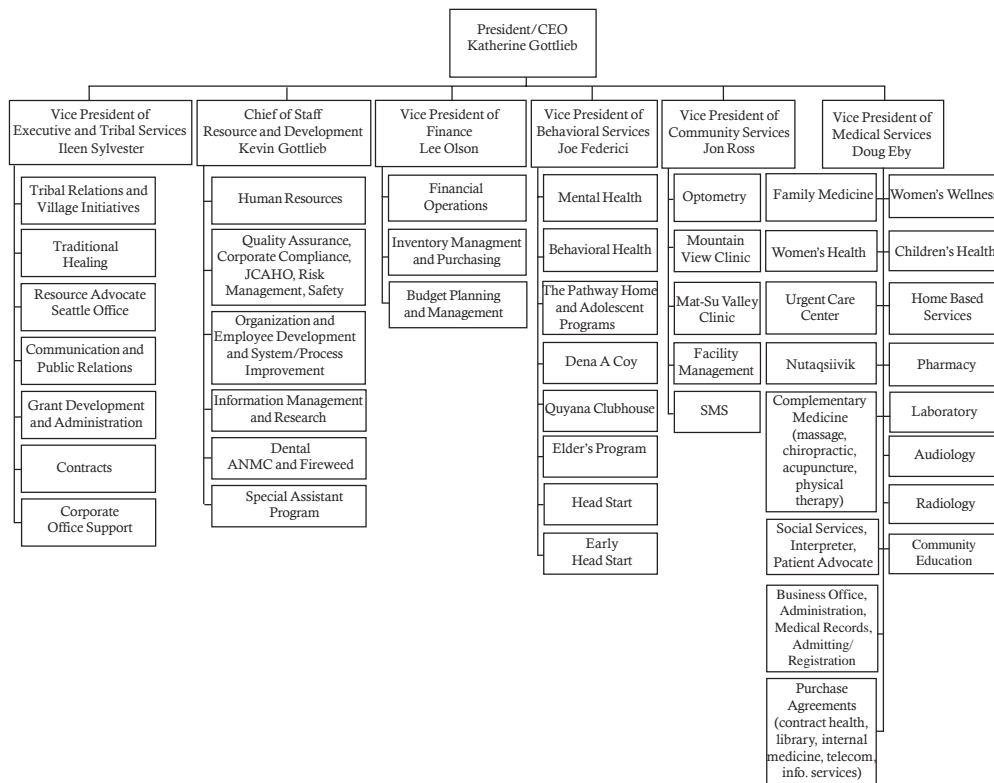
**Cynthia Morman**  
Program Manager  
the Elder's Program



**Kim Kinnebrew**  
Special Assistant  
Resource and  
Development

Spotlight on staff success stories may be found on page 6.

# Southcentral Foundation Organization Chart



## Southcentral Foundation Board of Directors

**Dear CIRI Shareholders,**

As we near the 20<sup>th</sup> Anniversary of Southcentral Foundation in 2002, I am reflecting on our past successes and looking forward to the continued success of our organization for the next 20 years.

Southcentral Foundation takes great pride in providing services that respond to customer needs. Southcentral Foundation has based its last 20 years on expanding health care and related services while working together with the Native Community to provide the best customer-based care possible. It is our goal to continue expanding our services and ensuring that customer needs are being met.

I am proud to be part of an organization that considers the needs of our People from prenatal care through Elder services. With

programs such as the RAISE Program (youth internships), I believe we are working with the Native Community to develop leadership skills in our teenage population and will see the future benefits of our efforts. I have made a personal commitment to join the RAISE Program every summer at Spirit Lake where youth blend the work skills they have learned on-the-job with practical camping skills that bring together traditional and modern life skills.

In addition, I am committed to our Elder Program where our Elders receive assistance from a professional team of caregivers. These services allow for access to needed health care as well as lunch services and home visits. Our staff is devoted to increasing the quality of life while maintaining a healthy and respectful

environment.

There are so many programs that extend from our Alaska Native Medical Center Campus to target health care issues within our community. Southcentral Foundation continues to expand these services to meet changing health care needs. Our latest effort is to address detoxification needs and we are holding community meeting to strengthen the existing network of services in a culturally appropriate manner.

When you visit our clinics and programs, please look for a directory of services. With over 60 programs, we may be able to provide additional services to you and your family.

*Sophia Chase  
Chairman of the Board of Directors  
Southcentral Foundation*

In meeting the mission statement of Southcentral Foundation, SCF has formed or joined in partnerships statewide and locally to reach the goal of the vision statement. The purpose of SCF is to address the needs of Alaska Native/American Indian people. For questions, comments, or submission of articles, write to Anchorage Native News Editor, Southcentral Foundation, 4501 Diplomacy Drive, Anchorage, Alaska 99508; or call (907) 729-4955. ANN reserves editorial rights to all submissions for content. All articles will be considered for each publication, depending on the space available. Deadline for next issue is June 15, 2001.

©2001 Southcentral Foundation



## Office of the President

### Dear CIRI Shareholders,

On March 13, 2001, Southcentral Foundation unveiled a new organization structure creating a new division and renaming several divisions to better represent services that they provide. Southcentral Foundation strives to provide the best health care and related services for the Native Community; it is our goal to continually improve the services that we provide.

The restructuring reflects a shift in the scope of the Operations Division, which has been renamed the Executive and Tribal Services Division. The Division's responsibilities include assisting the Office of the President, administering Tribal Relations and Village Initiatives, Traditional Healing, the Resource Advocate Office in Seattle, Washington, in addition to Communication and Public Relations, Grant Development, Contracts, and Corporate Office Support. The Seattle program provides assistance to Alaska Natives living in the area. It has

expanded by adding a new staff member and moving to a larger location within the Seattle Indian Health Board facility.

The Chief of Staff Division is now the Chief of Staff, Resource and Development Division, which contains Human Resources, JCAHO, Risk Management, Safety, Organization and Employee Development and System Process Improvement, Information Management and Research, Dental (ANMC and the Fireweed locations), and Special Assistant Program.

The Finance Division continues to oversee budget planning and management with its primary focus on the financial needs of Southcentral Foundation.

The Medical Services Division remains the same with the following programs and services: Family Medicine Clinic; Children's Clinic; Women's Health Clinic; Urgent Care Center; Audiology; Radiology; Laboratory; Nutaqsiivik; Complementary Medicine; Home Based Services; Pharmacy; Social

Services; Patient Advocate; and Purchase Agreements.

The new Community Services Division manages Southcentral Foundation's Facilities and SMS within the Alaska Native Medical Center (ANMC) Campus in addition to services provided off the ANMC Campus such as Optometry, Mountain View Clinic, and Mat-Su Health Clinics.

The Human Services Division is now the Behavioral Services Division, and provides services in Mental Health, Behavioral Health, The Pathway Home Adolescent Programs, Dena A Coy, Quiana Clubhouse, the Elder Care Program, and the Head Start and Early Head Start programs.

Please review the organizational chart for additional detailed information. Thank you for joining us in our commitment to promoting wellness.

*Katherine Gottlieb  
President/CEO Southcentral Foundation*

Pharmacy

Laboratory



Ileen Sylvester, Vice President  
Executive and Tribal Services

4501 Diplomacy Drive  
Anchorage, Alaska 99508  
Phone (907) 729-4955  
Fax (907) 729-5000

### Executive and Tribal Services Division

Executive and Tribal Services Division responsibilities include assisting the Office of the President, administering Tribal Relations and Village Initiatives, Traditional Healing, the Resource Advocate Office in Seattle, Washington, in addition to Communication and Public Relations, Grant Development Administration, Contracts, Corporate Office Support, and Computer Resources.

#### Tribal Initiatives

Program staff provide support for health care delivery to 55 villages throughout the Anchorage Service Unit, including the Village Services Management Team, which advises the Southcentral Foundation Board of Directors on all matters related to provision of village health care services.

#### Traditional Healing Program

The intent of this program is to honor

traditional Alaska Native and American Indian approaches to health, and to provide them in conjunction with services offered at Southcentral Foundation and the Alaska Native Medical Center. Examples of these practices include prayer, massage, songs, dance and consultations with Elders.

#### Alaska Native Health Resource Advocate

c/o Seattle Indian Health Board  
611 12th Avenue South, Room 407  
Seattle, WA 98144  
Phone (206) 834-4055

The Health Resource Advocate program, which recently expanded, helps Alaska Natives in the Seattle area with referral and information services. The advocate program connects people with health, social, education, legal and other programs.



Kevin Gottlieb, Chief of Staff  
Resource and Development

4501 Diplomacy Drive  
Anchorage, Alaska 99508  
Phone (907) 729-4955  
Fax (907) 729-4961

### Chief of Staff, Resource and Development Division

Resource and Development Division provides the following services: Human Resources, JCAHO, Risk Management, Safety, Organization and Employee Development and System Process Improvement, Information Management and Research, Dental (ANMC and the Fireweed locations), and the Special Assistant Program.

#### Quality Resources

Quality Resources tracks client concerns and their resolutions, monitors state and federal legal and accreditation issues, and helps in the improvement of systems and clinical quality.

#### Special Assistant Program

Special Assistant staff provide project management and planning for existing and proposed corporate programs. Among other enterprises, the special assistants in this

department are involved in managing construction of the new facilities for The Pathway Home and Dena A Coy, and the expansion of the Anchorage Native Primary Care Center.

#### Dental Clinics

Alaska Native Medical Center  
Phone 907-729-2000  
Fax 907-729-2041  
and 670 West Fireweed Lane  
Anchorage, AK 99503  
Phone (907) 265-4211  
Fax (907) 258-9210

SCF offers a wide array of dental services at two locations. These services include examinations, cleaning, fillings, crowns, bridges, root canals, dental surgery, orthodontic procedures and dentures. Care of children is a priority at the ANMC location.



Lee Olson  
Vice President of Finance

4501 Diplomacy Drive  
Anchorage, Alaska 99508  
Phone (907) 729-4955  
Fax (907) 729-4961

## Finance Division

The Finance Division is responsible for financial operations, including inventory management and purchasing, budgeting, accounting, investments, safeguarding of assets, and reporting, both internally to the board of directors and management, and externally to funding and other regulatory agencies. The division offers advice and assistance to all departments of Southcentral Foundation to enable them to efficiently manage their program funds.



Joe Federici  
Vice President of Behavioral Services

## Behavioral Services Division

group, adult female victims of domestic violence, adolescent anger management, child sexual abuse (for adolescent females), foster children, and dealing with depression. This program also provides advocacy, residential placement, case management, and support services for victims of domestic violence.

In addition, this program provides holistic, rehabilitative treatment for severely emotionally disturbed 13- to 18-year-olds who are on formal or informal probation or whose behavior puts them at risk for any number of social consequences. Based on a model of accountability and responsibility, the program has a strong cultural component and, as such, encourages family participation. Pathways teams treat the whole person using a culture-based approach — families are urged to participate. Treatment focuses on:

- Responsibility,
- Respect for self and others,
- Methods for coping with life's challenges,
- Correcting the thinking that stops the youth from reaching their goals, and
- Building upon the individual's strengths.

### Quyana Clubhouse

225 Eagle Street  
Anchorage, AK 99501  
Phone (907) 278-6619  
Fax (907) 278-6631

Quyana Clubhouse is a program for people who are experiencing severe, persistent mental illness. It incorporates clinical practices with traditional Native ceremony and structure to offer a nurturing environment focusing on peers, family and the community. The program incorporates vocational and pre-vocational training. The Supported Living program helps individual Quyana Clubhouse members in adjusting to community living. Quyana Clubhouse services include psychosocial rehabilitation, medication management, case management, employment skills, psychiatric services, and group and individual therapy.

### Head Start

1818 West Northern Lights  
Anchorage, AK 99517  
Phone (907) 276-4323  
Fax (907) 278-0627

Head Start is an early childhood development program that provides comprehensive, culturally appropriate education, special needs assessment, health,

nutrition services, family services, family involvement, and transportation to 3- to 5-year-old Alaska Native or American Indian children and their families who meet federal Head Start eligibility requirements. In addition to its in-house program, Head Start offers a home-visitation service.

### Early Head Start

3101 Penland Parkway, Space A14  
Anchorage, AK 99508  
Phone (907) 258-5477  
Fax (907) 258-5488

Early Head Start is similar to Head Start (see preceding listing), but serves children who are 6 weeks to 3 years of age.

### Dena A Coy Program

Residential Treatment Program  
Transitional Support Program  
Phone (907) 333-6677  
Fax (907) 333-1716

Dena A Coy is a comprehensive FAS prevention program. It offers substance abuse and mental health treatment for substance-abusing women and is designed to allow women to remain in treatment throughout the duration of their pregnancy and 10 weeks postpartum. The transitional program assists graduates on an outpatient basis for about two years.

### Prenatal Support

4320 Diplomacy Drive, Suite 102  
Anchorage, AK 99508  
Phone (907) 729-3141  
Fax (907) 729-3170

This program screens prenatal women to determine their risk level for fetal alcohol syndrome. Staff offers case management, postpartum discharge, education and counseling.

### Elder's Program

9131 Centennial Circle  
Anchorage, AK 99504  
Phone (907) 338-4226

Elder workers provide assistance to Native Elders by cooking, cleaning, arranging appointments and providing other types of assistance as needed. The workers keep the Elders connected with the community by coordinating group outings such as potlatches, berry-picking and attending health fairs.

### RAISE Program

4105 Tudor Centre Drive  
Anchorage, AK 99508  
Phone (907) 729-5010  
Fax (907) 729-5000

Continued on page 5

### The Pathway Home

The Pathway Home is a new statewide residential substance abuse and mental health treatment program for at-risk Native youth, ages 13 to 18. The program provides integrated and culturally appropriate treatment, education/vocational training, and includes family and community-centered aspects of substance abuse and mental health treatment and rehabilitation.

### Mental Health

Phone (907) 729-2500

This full-service outpatient psychiatric clinic includes providers from several mental health disciplines. They offer confidential evaluation and treatment, including individual, couples, family and group therapies. Types of treatment include biofeedback, hypnosis, drug treatment, cognitive therapy, anger management and other forms of psychotherapy. Program staff also consult with Inpatient Services and the Emergency Room. On-call coverage for psychiatric emergencies is available 24 hours a day.

### Behavioral Health Services

401 East Fireweed Lane  
Anchorage, AK 99503  
Phone (907) 265-4220  
Fax (907) 265-4233

This program provides outpatient counseling and psychosocial assessment to people of all ages who are experiencing mental health problems that require professional help. We offer individual, marital, family and group counseling in a culturally appropriate setting. Services for people of all ages include psychiatric treatment, clinical assessment, psychological testing, and group and individual therapy. Group therapy includes an adult women's

**Behavioral Health continued from page 4**

Southcentral Foundation offers a summer and winter intern program for 14- to 18-year-

olds to acquaint them with the work environment and give them experience in health-related careers.



Jon Ross  
Vice President of Community Services  
4501 Diplomacy Drive  
Anchorage, Alaska 99508  
Phone (907) 729-4955  
Fax (907) 729-5000

## Community Services Division

The Community Services Division provides administrative, support functions, and medical services that are provided outside of the Alaska Native Medical Center. These include: the Mountain View Health Clinic, Optometry Department, the Matanuska-Susitna Valley services, facilities management, and Southcentral Foundation's interests in the implementation of a new finance and billing system for Alaska Native Medical Center.

### Optometry Clinic

670 West Fireweed Lane  
Anchorage, AK 99503  
Phone (907) 265-4263  
Fax (907) 265-4250

Eye care services can be obtained at two locations. Services include comprehensive examinations, contact lens fitting, eye disease management, special testing and surgical referrals. The clinic has a full-service dispensary that provides eyeglasses and eyeglass repairs, contact lenses, low-vision aids, and related products.

### Optical Shop at Alaska Native Medical Center

4315 Diplomacy Drive  
Anchorage, AK 99508  
Phone (907) 729-1471

The Optical Shop supplies eyeglasses, accessories and dispensing services for people who find the hospital location convenient. The shop offers quality vision products at affordable prices.

### Mountain View Health Center

3521 Mountain View Drive  
Anchorage, AK 99508  
Phone (907) 729-2306  
Fax (907) 792-2369

SCF and Anchorage Neighborhood Health Center jointly operate this program, which has new facilities in Mountain View. It is a full-service primary care location with physician services, lab, and medications, and is an extension of the ANMC system. Through our partnership with ANHC, families with Native and non-Native members can all be seen in one location.

### Facilities

Facilities staff administer the maintenance and renovation of all SCF facilities and the negotiation of lease agreements; help plan for long-term facility space needs and land development; and direct the construction management of all new SCF facilities.



Dr. Douglas Eby  
Vice President of Medical Services  
4501 Diplomacy Drive  
Anchorage, Alaska 99508  
Phone (907) 729-4955  
Fax (907) 729-5000

Southcentral Foundation assumed management of primary care services at the Alaska Native Medical Center March 1, 1998. Most of these services are located in the Anchorage Native Primary Care Center (PCC). The Medical Services Division offers a full range of primary care services. Pharmacy, radiology and laboratory services are also offered in the PCC. Unless otherwise noted, each service is provided in the PCC at ANMC.

### Family Medicine Clinic

Phone (907) 729-3300

The physicians and mid-level practitioners at Family Medicine treat people of all ages. The clinic offers a full spectrum of primary care to residents of Anchorage and the villages of the Anchorage Service Unit. Case managers help coordinate urban and village care. They strive to become partners with the

## Medical Services Division

people they serve in order to promote health and wellness in the community by providing care that is based in continuity and relationship. Saturday and evening appointments are available.

### Children's Clinic

Phone (907) 729-1000

This clinic offers local primary care and specialty consultative care for children. In addition to its staff of full-time pediatricians and pediatric nurse practitioners, the clinic brings in many pediatric specialists. Primary care based in continuity and relationship is emphasized. Case management, coordination with statewide primary care providers, parents and families are central to the care of the children.

### Women's Health Clinic

Phone (907) 729-3100

The Women's Health Clinic provides surgical, consultative and pregnancy care, and many other women's health services. The staff include a variety of health care professionals who are trained in women's health. This program helps support the entire Native health system in Alaska.

### Social Services

Social services are available through SCF social workers. The social workers coordinate services for patients and families by working closely with them and staff members.

### Pharmacy

SCF provides outpatient and village pharmacy services. The pharmacy in the Anchorage Native Primary Care Center offers a wide variety of consultative and dispensing services. The village pharmacy provides support for the rural-based system of care.

### Radiology

The Anchorage Native Primary Care Center offers radiology services, including ultrasound and mammography. For the most part, images are obtained in the digital format, allowing them to be viewed in multiple locations.

### Laboratory

The Primary Care Center houses a lab that is capable of providing most basic laboratory services. More specialized testing is available in the hospital lab.

Urgent Care Center  
4315 Diplomacy Drive  
Anchorage, AK 99508  
Phone (907) 729-1729

Located in Alaska Native Medical Center's Emergency Room, this clinic accepts the people who go to the emergency room, but have less critical needs. Staff consist primarily of mid-level providers who emphasize quick encounters with referrals to other clinics when necessary.

### Patient Advocates

4315 Diplomacy Drive  
Anchorage, AK 99508  
Phone (907) 729-1114

The Patient Advocates work with patients to help them navigate the Alaska Native Medical Center system of care. In doing so, the Patient Advocates listen to concerns and comments and relay information to the appropriate person, who takes necessary actions. Several of the Patient Advocates are fluent in Yupik and assist Yupik-speaking patients by interpreting to staff.

### Audiology

4315 Diplomacy Drive  
Anchorage, AK 99508  
Phone (907) 729-1400

Continued on page 6

**Medical Services continued from page 5**

The Audiology Clinic offers comprehensive hearing evaluations, counseling and specialized procedures. In addition, hearing aid evaluations/fittings are performed using state-of-the-art technology. Services are offered in coordination with the Ear, Nose, Throat Service.

**Women's Wellness Program**

4155 Tudor Centre Drive, Suite 205  
Anchorage, AK 99508  
Phone (907) 729-2180

This program is developing educational materials and programs related to the prevention of cancer, cardiovascular illness and other women's health problems. Of priority is improved access to cancer-prevention activities. Research on reducing cardiovascular risk in women is underway.

**Maternal Child Health Program**

Phone (907) 729-3143

Maternal Child Health staff coordinate care of prenatal women living in Anchorage Service Unit communities. They offer direct

care and education in villages, assess risk, and make referrals.

**Nutaqsiivik**

4105 Tudor Centre Drive, Suite B-1  
Anchorage, AK 99508  
Phone (907) 729-3260

Nutaqsiivik provides intensive case management to certain families, mothers, infants and young children in home and clinic settings.

**Minority Organ and Tissue Transplant Education Program (MOTTEP)**

Phone (907) 729-3257

This program educates people about organ donation and disease prevention to promote informed choices regarding organ donation in the future, as well as to reduce organ-related disease.

**Home-Based Services**

Pacific Home Health  
4105 Tudor Centre Drive, Suite B-1  
Anchorage, AK 99508

Phone (907) 729-2490  
Fax (907) 729-2489

Southcentral Foundation provides a variety of home-based services, which include acute care, chronic care, respite care and hospice through Pacific Home Health. A personal-care attendant service is also available. Most of these require a referral from a health care provider.

**Health Education Department**

Phone (907) 729-4991

This department provides health education that is fully integrated into the health care system. Health Education works together with patients, their families and their primary care provider. The department uses a culturally appropriate and interdisciplinary approach, focusing on wellness, awareness, prevention, and treatment. Services include smoking cessation, car seat loaner program, safety and injury prevention, nutrition services, and other health education classes.

## Southcentral Foundation's Spotlight on Staff Success

### Jon Ross, Vice President of Community Services

In March, Southcentral Foundation, the non-profit healthcare affiliate of CIRI, named Jonathon Ross as the Vice President of the new Community Services Division. As Vice President of the newly created Community Services Division, he oversees administrative, support functions, and medical services that are provided outside of the Alaska Native Medical Center. These include: the Mountain View Health Clinic, Optometry Department, the Matanuska-Susitna Valley services, facilities management, and Southcentral Foundation's interests in the implementation of a new finance and billing system for Alaska

Native Medical Center. Ross expressed that he wishes to see "Improved services for Alaska Natives and American Indians in the Anchorage and Matanuska-Susitna area that go beyond the walls of the Alaska Native Medical Center."

Ross a Dena'ina Athabascan, is of the Kenaitze Indian Tribe. He is a CIRI shareholder and member of the Salamatof Native Association. He graduated with a BA in 1994 from Toccoa Falls College in Toccoa, Georgia. In 1999, he earned his Masters Degree in Business Administration from University of Alaska Anchorage with

assistance through Southcentral Foundation's Employee Scholarship Program.

For the past two and a half years, Ross worked as Southcentral Foundation's Health Systems Administrator of Medical Services, where he oversaw several programs such as Optometry, Audiology, and the Mountain View Health Clinic for the Medical Services Division. Ross said, "It is an honor to be a new Vice President of Southcentral Foundation and have the opportunity to positively impact the Alaska Native system of healthcare."

### Cynthia Morman, Program Manager for the Elder's Program

Since the Fall of 2000, Cynthia Morman has been the Program Manager for Southcentral Foundation Elder's Program. The Elder Program provides Alaska Native and American Indian Elders aged 55 years and older residing in the Anchorage area with health and community resources. Home visitation, advocacy, light housekeeping, meal preparation, shopping, transportation and a daily lunch program are a few of the support services offered.

In her present role as Program Manager, Cynthia oversees various health and social support services, ensures compliance with the various grants, and is continually developing new opportunities to expand the program

along with offering new services to its clientele. The Elder's Program currently provides services to over 650 Alaska Native and American Indian Elders throughout the Anchorage community. The program organizes the monthly *Elder Potluck*, which features Native foods, entertainment and opportunities for friends to socialize and have fun. She is also developing the first Elder's Program monthly newsletter; the first issue, from April 2001, is now available.

Cynthia's previous position within Southcentral Foundation was Special Assistant. In this role she participated in a variety of projects including assisting in development of Southcentral Foundation's

Primary Care Center expansion, The Pathway Home and the Dena A Coy construction projects. She also developed and implemented Southcentral Foundation's first Internet web site and facilitated various events and special projects for Executive Staff.

Cynthia, a CIRI shareholder, was born and raised in Anchorage and is of Haida, Eskimo and African American descent. She is a 1999 graduate of Stanford University with a Bachelor of Arts in Psychology and is currently working towards a Master's Degree in Public Administration at the University of Alaska Anchorage with assistance through Southcentral Foundation's Employee Scholarship Program.

### Kim Kinnebrew, Special Assistant, Resource and Development Division

In February 2001, Kim Kinnebrew became a Special Assistant for Southcentral Foundation's Resource and Development Division. As a Special Assistant, Kim provides assistance on a variety of projects and tasks such as Southcentral Foundation's Primary Care Center expansion, analyzing customer service data trends, and working on the substance abuse coalition project. In addition, Kim works with the Urgent Care Center.

Kim was a Physician's Assistant with Southcentral Foundation's Family Medicine department from 1996 to 1999 and a Community Health Aide Instructor in ANTHC's Community Health Aide Program from 1999 to February 2001. As a CHAP Instructor, Kim was responsible for training Community Health Aides who came into Anchorage from the villages. Presently she serves on the board for MOTTEP (the

Minority Organ and Tissue Transplant Education Program).

Kim was born in Ketchikan and raised in Kenai. She is a CIRI shareholder and is of Tsimshian and Caucasian descent. Kim graduated from Oregon State University with a Bachelor of Science degree and is a 1996 graduate of the University of Washington Medical School with a Physician's Assistant degree.

## Southcentral Foundation construction update



Construction projects pictured above from left to right is the Anchorage Native Primary Care Center, estimated to be open in fall 2001; The Pathway Home, estimated to be completed in late May; and Dena A Coy, estimated to be finished in May of 2001.

In providing healthcare and related services, Southcentral Foundation is expanding to meet the needs of the population. In doing so, Southcentral Foundation is completing four major construction projects: the expansion of the Primary Care Center, the Early Head Start Facility; and new facilities for The Pathway Home and Dena A Coy programs.

The largest of these projects is the new wing of the Anchorage Native Primary Care Center, which will approximately double the size of the existing facility. That project is 75 % complete with an estimated opening date in fall 2001. The new Primary Care Center will house the expanded Family Medicine and

Mental Health Clinics, the New Patient Resource Center, an expanded Traditional Healing Program and the new Complementary Medicine area that includes a Chiropractic Center, an Acupuncture Center, a Physical Therapy Clinic, and Massage Therapy.

The second project is a new facility for The Pathway Home. This 25,000 square-foot structure will house a residential substance abuse and mental health treatment program for at-risk Native youth. It is scheduled to be completed in late May of this year.

The Dena A Coy program will also be moving into a new 10,000 square-foot facility this year. It is custom designed to fit the needs

of the program and its clientele. The Dena A Coy program assists pregnant, substance-abusing mothers and their babies. That building should be finished in early May 2001.

The final construction project for Southcentral Foundation is the expansion of the Early Head Start program space in the Northway Mall. This expansion will increase the program's capacity and will add a new kitchen. The Early Head Start program provides culturally appropriate comprehensive child development services for Alaska Native and American Indian infants and toddlers from birth to 3 years old and pregnant women. The expansion should be completed by May 2001.

## Southcentral Foundation seeks professional staff

Are you interested in a new career opportunity? Does a profession in health care interest you? Southcentral Foundation has open positions within many of our programs and services that may be the opportunity you are seeking. Southcentral Foundation has position openings on our main campus (4501

Diplomacy Drive, located next to the Alaska Native Medical Center) as well as throughout Anchorage at our program sites. Listed here are positions that are open until filled. For more information and applications for these positions, please contact Southcentral Foundation's Human Resource Department.

Contact Camille Millett, HR Recruiter either by telephone (907-729-4976) or stop by the office at 4501 Diplomacy Drive, Anchorage, Alaska 99508. Southcentral Foundation hires using Native Preference as required under P.L. 93-638 (preference will not be given unless certification is attached to the application).

### CURRENT LIST OF POSITION OPENINGS

MEDICAL SERVICES					
POSITION	DEPARTMENT	CLOSE DATE	POSITION	DEPARTMENT	CLOSE DATE
Dentist	Dental	OTF	Dietician	Nutrition	OTF
RN/Case Manager	Family Medicine	OTF	Registered Nurse	Home Based Services	OTF
RN/Case Manager	Women's Health	OTF	LPN	Urgent Care Center	OTF
Certified Medical Assistant/LPN	Women's Health	OTF	Patient Advocate	Medical Services	OTF
LPN/RN	Pediatrics	OTF	Patient Services	Physical Therapy	OTF
Administrative Support (i.e. Medical Clerk)	Medical Services	OTF	Assistant LPN/RN	Urgent Care Center	OTF
Psychiatrist	Mental Health	OTF	Health Education Associate	Health Education and Nutrition	OTF
			OB/GYN	Women's Health	OTF

## CURRENT LIST OF POSITION OPENINGS

### MEDICAL SERVICES continued

POSITION	DEPARTMENT	CLOSE DATE
Health Systems Administrator I or II	Women's Health	OTF
Case Manager PA/NP	Home Based Services Urgent Care Center	OTF
Optometrist	Optometry	OTF
RN/Case Manager (Colorectal Screening Program)	Family Medicine	OTF
Medical Radiology Technologist (i.e. Radiologic Technologist)	Radiology	OTF
Master's Level Therapist	Mental Health	OTF
Advanced Nurse Practitioner	Mental Health	OTF
Physician	Pediatrics	OTF
RN/LPN	Women's Wellness Project	OTF
Certified Nurse Assistant (Part-time)	Home Based Services	OTF

### BEHAVIORAL HEALTH SERVICES

POSITION	DEPARTMENT	CLOSE DATE
Clinician II	Intern Program	OTF
Relief Treatment Support Staff	Dena A Coy	OTF
Teacher (Part-time)	Early Head Start	OTF
Cook/Culinary Instructor	The Pathway Home	OTF
Clinician II	The Pathway Home	OTF
Clinical Associate I, II, III	The Pathway Home	OTF
Clinical Supervisor	The Pathway Home	OTF
Clinical Associate II and III	The Pathway Home	OTF
Mental Health Worker	The Pathway Home	OTF
Mental Health Worker	Quyana Clubhouse	OTF
Substitute Bus Driver	Head Start	OTF
Health Services Aide (Temporary)	Head Start	OTF
Substitute Cook	Head Start	OTF
Assistant Cook	Head Start	OTF
Substitute Teacher Aide	Early Head Start	OTF
Treatment Support Staff	Dena A Coy	OTF
Clinical Associate I	Dena A Coy	OTF

### BEHAVIORAL HEALTH SERVICES continued

POSITION	DEPARTMENT	CLOSE DATE
Clinician (Part-time)	Dena A Coy	OTF
Certified Teacher K-12	The Pathway Home	OTF
Clinician I and II	Behavioral Health Services	OTF
Clinical Associate	Behavioral Health Services	OTF

### OPERATIONS

POSITION	DEPARTMENT	CLOSE DATE
Manager	Grant Development and Administration	OTF
Corporate Communication Public Relations Director	Executive and Tribal Services	OTF
Chief Information Officer	Office of the President	OTF
Administrative Support I (Part-time)	Executive and Tribal Services	OTF

### Directory Listing

#### *Southcentral Foundation*

4501 Diplomacy Drive  
Anchorage, AK 99508  
Main Number (907) 729-4955



<b>Office of the President</b>	<b>729-4955</b>
<b>Behavioral Services</b>	
Behavioral Health	265-4220
Quyana Clubhouse	278-6619
Dena A Coy	
Head Start	276-4323
Early Head Start	258-5477
Elder's Program	338-4226

**Medical Services**  
**Anchorage Primary Care Center**  
4320 Diplomacy Drive  
Anchorage, AK 99508  
(907) 729-3250

Children's Clinic	729-1000
Family Medicine Clinic	729-3300
Mental Health	729-2500
MOTTEP	729-3257
Urgent Care Center	729-1729
Women's Health	729-3100
Nutaqsivik	729-3260
Dental Clinic - Fireweed	265-4211
Ortho Clinic - Fireweed	265-4221
Dental Clinic - ANMC	729-2000
Optometry Clinic - Fireweed	265-4214
Optometry Clinic - ANMC	729-1471
Mountain View Clinic	278-2268

The programs listed above are only some of the services Southcentral Foundation provides. Please call the main office for complete directory.